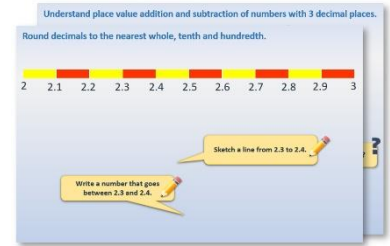


Year 1: Week 4, Day 1

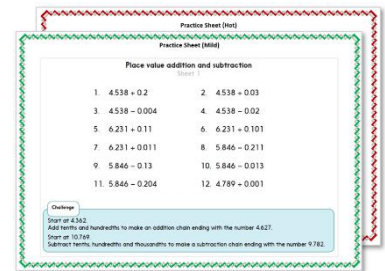
Add 10s to 2-digit numbers

Each day covers one maths topic. It should take you about 1 hour or just a little more.

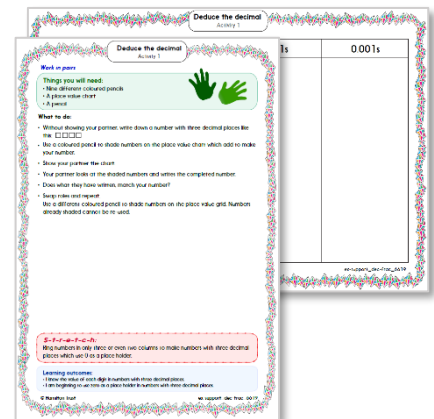
- Start by reading through the **Learning Reminders**. They come from our *PowerPoint* slides.



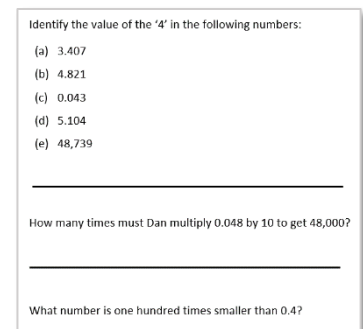
- Tackle the questions on the **Practice Sheet**. There might be a choice of either **Mild** (easier) or **Hot** (harder)! Check the answers.



- Finding it tricky? That's OK... have a go with a grown-up at **A Bit Stuck?**




- Have I mastered the topic? A few questions to **Check your understanding**. Fold the page to hide the answers!



Learning Reminders

Adding 10s to a 2-digit number.

1-100 number grid

1	2	3	4	5	6	7	8	9	10
 11	12	13	14	15	16	17	18	19	20
21	22	23	24	25	26	27	28	29	30
31	32	33	34	35	36	37	38	39	40
41	42	43	44	45	46	47	48	49	50
51	52	53	54	55	56	57	58	59	60
61	62	63	64	65	66	67	68	69	70
71	72	73	74	75	76	77	78	79	80
81	82	83	84	85	86	87	88	89	90
91	92	93	94	95	96	97	98	99	100

Can you remember
how spider helps us
to add?

Counting in 10s saves
us having to count on
in 1s, so makes
counting a lot quicker!

What is 21
add 20?

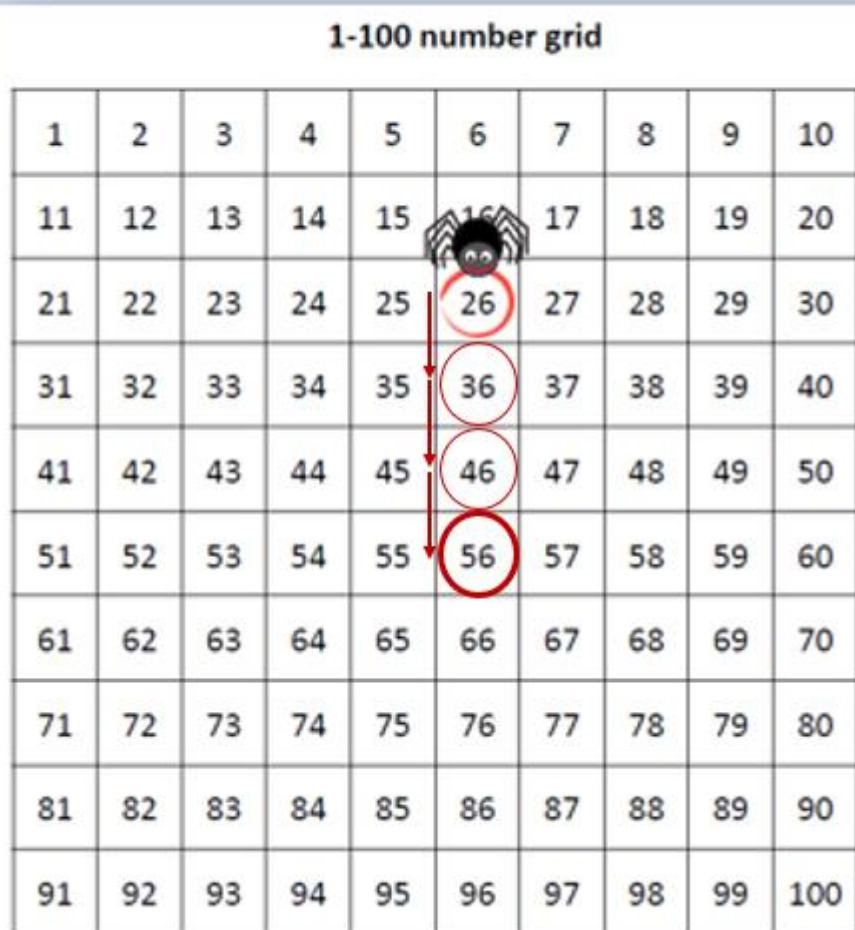
$$21 + 20 = 41$$

Learning Reminders

Adding 10s to a 2-digit number.

1-100 number grid

1	2	3	4	5	6	7	8	9	10
11	12	13	14	15	16	17	18	19	20
21	22	23	24	25	26	27	28	29	30
31	32	33	34	35	36	37	38	39	40
41	42	43	44	45	46	47	48	49	50
51	52	53	54	55	56	57	58	59	60
61	62	63	64	65	66	67	68	69	70
71	72	73	74	75	76	77	78	79	80
81	82	83	84	85	86	87	88	89	90
91	92	93	94	95	96	97	98	99	100



Let's try
26 add 30.

Where do you
think Spider will
land?

$$26 + 30 = 56$$

Learning Reminders

Adding 10s to a 2-digit number.

1-100 number grid

1	2	3	4	5	6	7	8	9	10
11	12	13	14	15	16	17	18	19	20
21	22	23	24	25	26	27	28	29	30
31	32	33	34	35	36	37	38	39	40
41	42	43	44	45	46	47	48	49	50
51	52	53	54	55	56	57	58	59	60
61	62	63	64	65	66	67	68	69	70
71	72	73	74	75	76	77	78	79	80
81	82	83	84	85	86	87	88	89	90
91	92	93	94	95	96	97	98	99	100

Can we do ?
27 add 40?

Where do you ?
think Spider
will land?

$$27 + 40 = 67$$

Practice Sheet Mild

Adding tens

Part A

The toy shop needs to increase all of its prices by 10p.
Can you work out the new prices?

A pink teddy bear is shown with a price tag of 39p and a blank box below it.
 A colorful toy train is shown with a price tag of 48p and a blank box below it.
 A flashlight is shown with a price tag of 51p and a blank box to its right.
 A yellow tennis ball is shown with a price tag of 33p and a blank box below it.
 An orange balloon is shown with a price tag of 11p and a blank box below it.
 A set of colored pencils is shown with a price tag of 26p and a blank box below it.

Part B

The toy shop needs to increase all of its prices by 20p.
Can you work out the new prices?

A blue toy car is shown with a price tag of 32p and a blank box below it.
 A close-up of a tiger's face is shown with a price tag of 17p and a blank box below it.
 A grey UFO is shown with a price tag of 27p and a blank box to its right.
 A yellow and green water gun is shown with a price tag of 41p and a blank box below it.
 A grey robot is shown with a price tag of 43p and a blank box below it.
 A red keychain with a yellow star is shown with a price tag of 23p and a blank box below it.

Practice Sheet Hot

Adding tens

Part A

The toy shop needs to increase all of its prices by 40p.
Can you work out the new prices?

Teddy bear: 36p
 Train: 29p
 Flashlight: 39p
 Robot: 58p
 Water gun: 47p
 Tennis ball: 11p

Part B

These toys have had a price increase too but the owner cannot work out how much.

Boat

~~33p~~
53p



How much has the price increased?



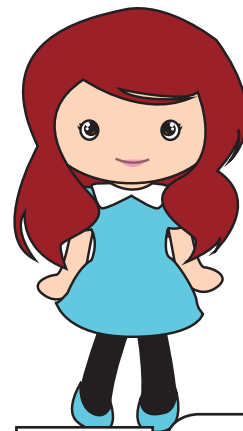
~~46p~~
86p



~~62p~~
92p



~~13p~~
53p



~~29p~~
79p



Practice Sheets
1-100 grid

1	2	3	4	5	6	7	8	9	10
11	12	13	14	15	16	17	18	19	20
21	22	23	24	25	26	27	28	29	30
31	32	33	34	35	36	37	38	39	40
41	42	43	44	45	46	47	48	49	50
51	52	53	54	55	56	57	58	59	60
61	62	63	64	65	66	67	68	69	70
71	72	73	74	75	76	77	78	79	80
81	82	83	84	85	86	87	88	89	90
91	92	93	94	95	96	97	98	99	100

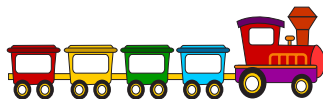
Practice Sheets Answers

Adding tens (mild)

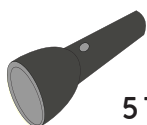
Part A



$39p + 10p = 49p$



$48p + 10p = 58p$



$51p + 10p = 61p$



$26p + 10p = 36p$



$11p + 10p = 21p$



$33p + 10p = 43p$

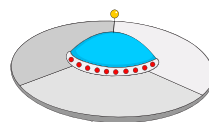
Part B



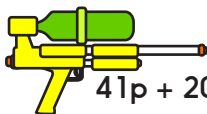
$32p + 20p = 52p$



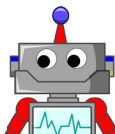
$17p + 20p = 37p$



$27p + 20p = 47p$



$41p + 20p = 61p$



$43p + 20p = 63p$



$23p + 20p = 43p$

Adding tens (hot)

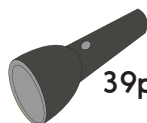
Part A



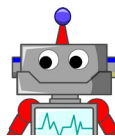
$36p + 40p = 76p$



$29p + 40p = 69p$



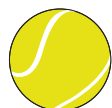
$39p + 40p = 79p$



$58p + 40p = 98p$



$47p + 40p = 87p$



$11p + 40p = 51p$

Part B



$46p + 40p = 86p$



$62p + 30p = 92p$



$13p + 40p = 53p$



$29p + 50p = 79p$

A Bit Stuck? Spider adds

Work in pairs

Things you will need:

- A 1-100 grid
- A spider
- Spider sums
- A pencil



What to do:

- Choose a Spider sum.
- Place Spider on the first number in the sum.
- Use Spider to add 10. Write the answer in the sum.
- Repeat for as many sums as you can.

S-t-r-e-t-c-h:

Make up some of your own Spider sums.

Learning outcomes:

- I can use Spider to add 10 to 2-digit numbers.

A Bit Stuck?
Spider adds

$18 + 10 =$

$24 + 10 =$

$27 + 10 =$

$38 + 10 =$

$36 + 10 =$

$50 + 10 =$

$42 + 10 =$

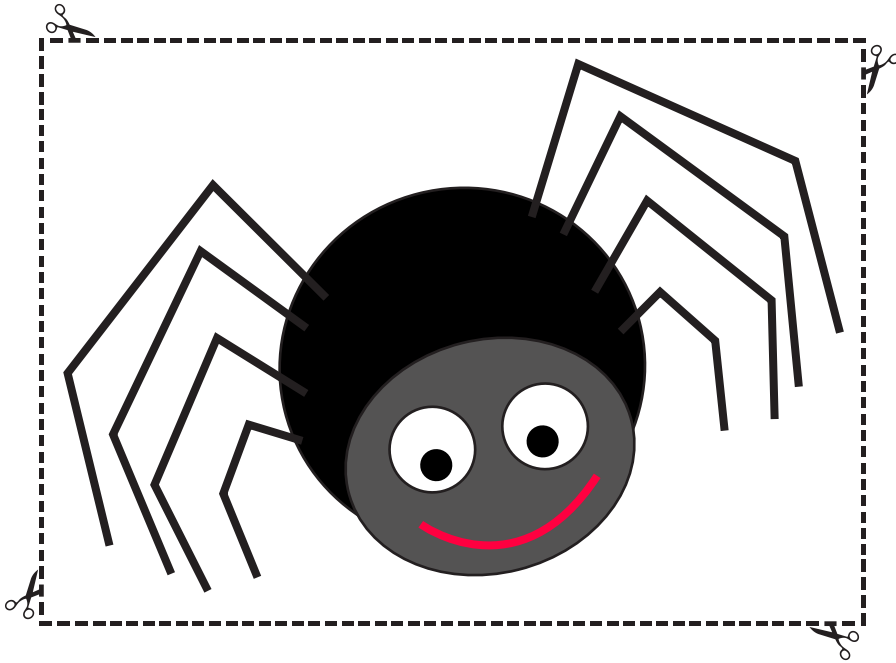
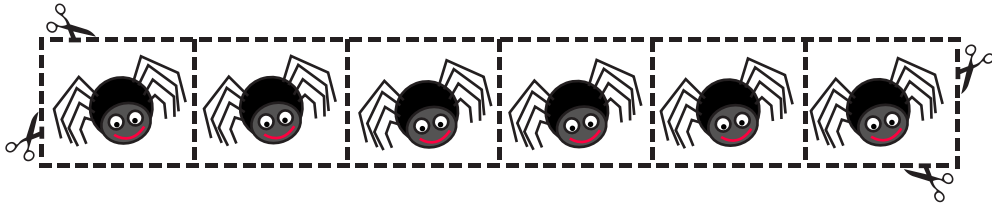
$85 + 10 =$



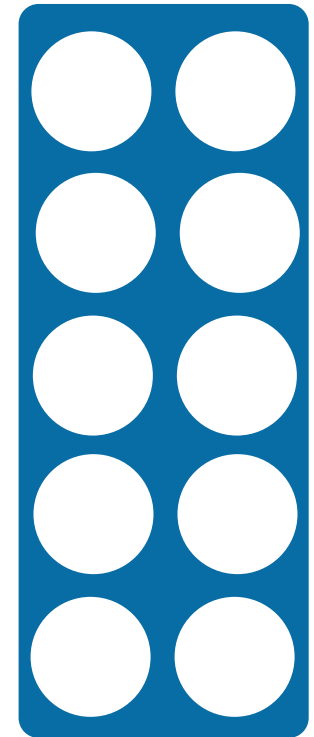
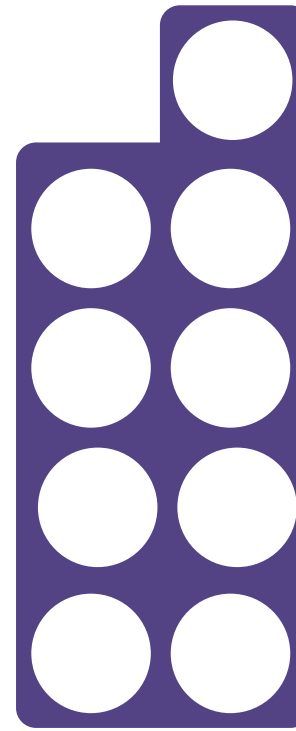
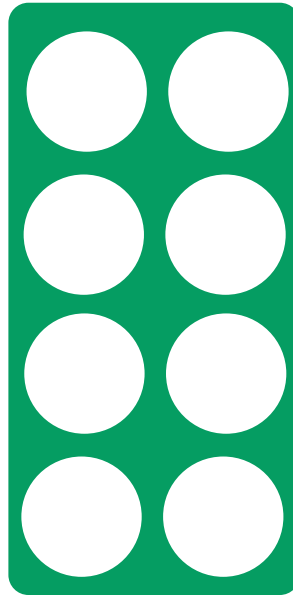
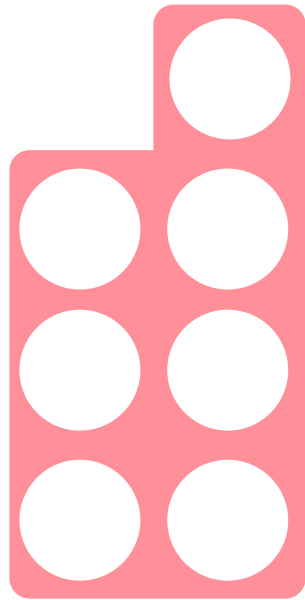
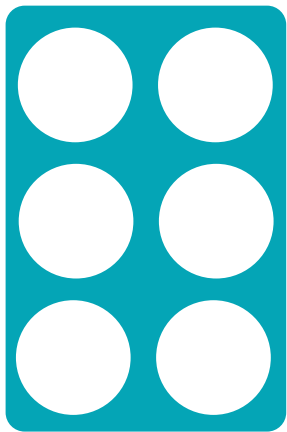
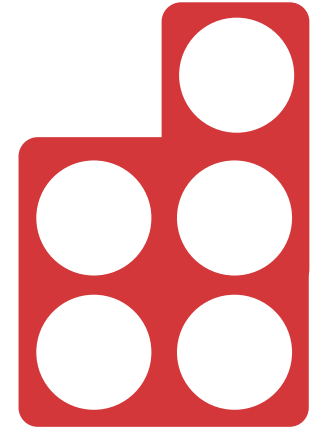
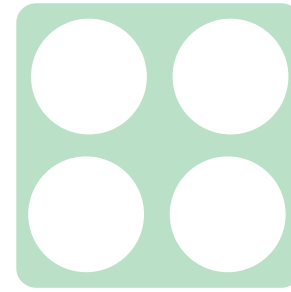
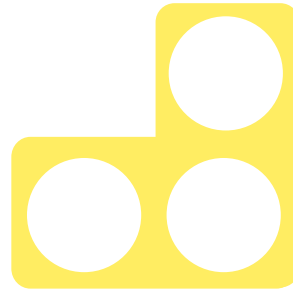
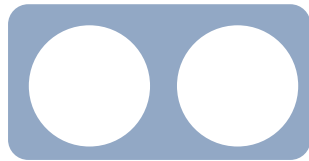
A Bit Stuck?
Spider adds

1	2	3	4	5	6	7	8	9	10
11	12	13	14	15	16	17	18	19	20
21	22	23	24	25	26	27	28	29	30
31	32	33	34	35	36	37	38	39	40
41	42	43	44	45	46	47	48	49	50
51	52	53	54	55	56	57	58	59	60
61	62	63	64	65	66	67	68	69	70
71	72	73	74	75	76	77	78	79	80
81	82	83	84	85	86	87	88	89	90
91	92	93	94	95	96	97	98	99	100

A Bit Stuck?
Spider adds



A Bit Stuck?
Spider adds



Check your understanding Questions

Complete each sentence.

$54 + 10 = \square$

$37 + \square = 47$

$42 + 20 = \square$

$\square + 20 = 83$

$66 + \square = 96$

Add 30 to each number:

53

24

18

46

Fold here to hide answers

Check your understanding Answers

Complete each sentence.

$54 + 10 = 64$

$37 + 10 = 47$

$42 + 20 = 62$

$63 + 20 = 83$

$66 + 30 = 96$

Some children may find the questions with the missing number on the left hand side (what has to be added to 37 to equal 47) trickier.

Add 30 to each number:

53 83

24 54

18 48

46 76